

Exeter Street Capital Partners is the independent sponsor affiliate of the Patriot Capital Group. We provide equity capital for promising lower middle market businesses with \$2-5 million of EBITDA within our focus sectors across North America.

We form close partnerships with the existing management of growing businesses where our capital, operating resources, financial expertise, strategic insights and professional network can accelerate growth and build long term value. Exeter Street believes that building great companies begins by establishing a seamless alignment of interests and trust among all stakeholders, then making a long-term commitment to strategies that can unlock those businesses' true potential.

Since 2015, Exeter has invested over \$325 million across 11 investments in the industrial growth & technology, business, consumer, and healthcare services sectors.

## Investment Criteria

- Greater than \$10 million of revenue
- \$2-5 million of EBITDA
- Control and structured equity opportunities
- Profitable businesses; demonstrated growth potential
- Meaningful founder / owner co-investment

## Target Characteristics

- Proven and sustainable competitive advantages
- Recurring revenue or customer characteristics
- Potential for optimizing product/service portfolio
- Opportunities for manufacturing optimization
- Pathways toward market leadership
- Long-term M&A and/or consolidation potential

## Focus Sectors



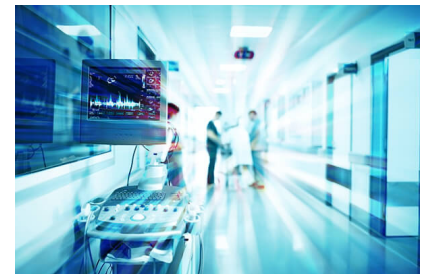
### Industrial Growth & Technologies

- Advanced Materials
- Aerospace & Defense
- Contract Manufacturing
- Environmental
- Flow and Process Control
- Food Processing
- Paper & Packaging
- Specialty Manufacturing
- Test, Inspection, Certification
- Value-Added Distribution



### Business and Consumer Services

- Education & Training
- Facility Services
- Financial Services
- Health & Safety
- IT Services
- Residential Services
- Security
- Supply Chain & Logistics
- Tech-Enabled Services
- Transportation



### Healthcare Services

- Behavioral Health
- Emergency Care
- Health & Wellness
- Home Health
- Information Technology
- Lab & Diagnostics
- Long Term Care
- Pharmaceutical Services
- Practice Management
- Revenue Cycle Management

## Representative Investments

